



TINSLEY ROAD, LONDON, E1

£399,999

Goldman Greg are delighted to offer this spacious three-bedroom split-level apartment arranged over the second and third floors, offering approximately 846 sq ft (78.6 sq m) of internal space.

The property features a bright and generously sized reception room, a separate fitted kitchen, and three well-proportioned bedrooms. The layout is ideal for modern living, with a separate bathroom and WC providing added convenience for families or sharers.

Just moments from Stepney Green underground and with a large supermarket and numerous shops and restaurants on the doorstep, and Whitechapel Station just a 10 minute walk away.

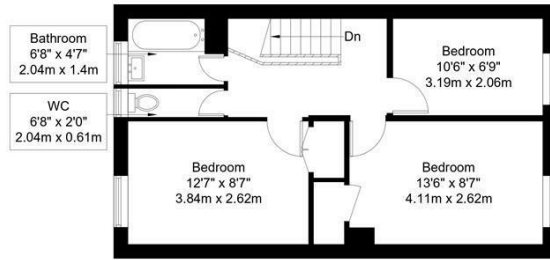
Ideal for first-time buyers, families, or buy-to-let investors, this property offers excellent potential and generous internal space.



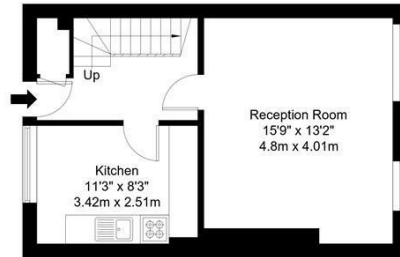
Goldman Greg

Tinsley Road, E1 3DA

Approx Gross Internal Area = 78.6 sq m / 846 sq ft



Third Floor

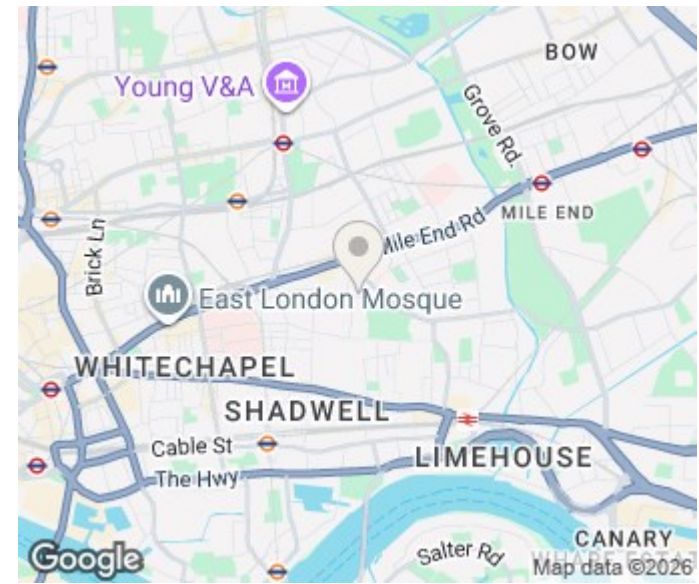


Second Floor

Ref :

Copyright **BLEU PLAN**

The Floor plan is not to scale and measurements and areas shown are approximate and therefore should be used for illustrative purposes only. The plan has been prepared in accordance with the RICS code of Measuring Practice and whilst we have confidence in the information produced it must not be relied on. Maximum lengths and widths are represented on the floor plan. If there is any aspect of particular importance, you should carry out or commission your own inspection of the property.
Copyright © BleuPlan



Energy Efficiency Rating		Current	Potential
<i>Very energy efficient - lower running costs</i>			
(92 plus) A			
(81-91) B			
(69-80) C		74	79
(55-68) D			
(39-54) E			
(21-38) F			
(1-20) G			
<i>Not energy efficient - higher running costs</i>			
England & Wales		EU Directive 2002/91/EC	

Agents Note: Whilst every care has been taken to prepare these particulars, they are for guidance purposes only. All measurements are approximate and are for general guidance purposes only and whilst every care has been taken to ensure their accuracy, they should not be relied upon and potential buyers/tenants are advised to recheck the measurements

Goldman Greg
143 Leman Street
London
E1 8EY

02079770018
leads@goldmangreg.co.uk
www.goldmangreg.co.uk

